

LEGEND

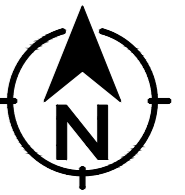
- ▲ Survey Station
- Sq. Manhole / Inspection Cover
- Circular Manhole / Inspection Cover
- BT comms Chamber
- Comms Cabinet
- Bollards
- TP - Tel pole
- EP - Elec pole
- LP - Lamp Column
- Gas valve
- WM - Water Meter
- SV - Water Stop Valve
- RS - Road Sign
- FH - Fire Hydrant
- G - Road Gully
- Ticket machine
- Pedestrian call button post
- PB - Pillar box
- Bench seating
- Overhead electricity
- Planters - PL
- Top embankment
- Bottom embankment
- Tarmac footpath / Surface change
- Services Excavation Scar
- Tactile paving
- Crash barrier fencing
- Post & wire fencing
- Concrete / paving
- Block paving

© This drawing should only be used for the purpose for which it is intended, all rights are reserved and it should not be reproduced without written permission. All dimensions should be checked on site and any discrepancies, ambiguities and/or omissions between this drawing and information issued in the accompanying report should be forwarded to this office for clarification before proceeding.

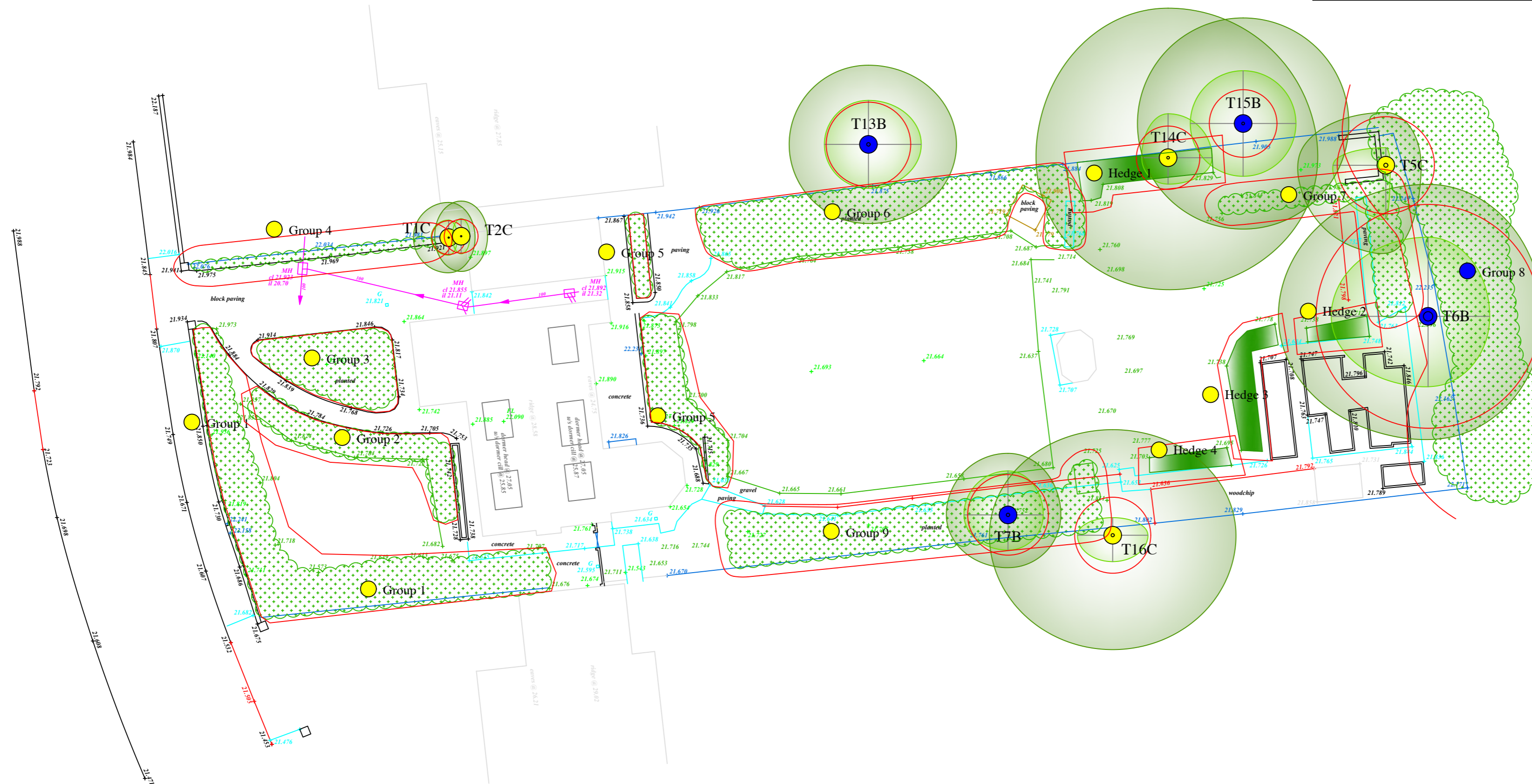
The original of this drawing was produced in colour - a monochrome copy should not be relied upon.

Key:

- ⊕ Tree Number
- ⊕ Tree Crown True Shape (Shaded Light Green)
- ⊕ Predicted Future Growth Of Canopy (Shaded Dark Green & Surrounding Current Crown Shape)
- ⊕ Trees To Be Removed (Broken Black Ring Surrounding Centre)
- ⊕ Tree Quality Assessment (Centre Colours As Below)
- ⊕ Green Centre = High Quality (Denoted By Letter A)
- ⊕ Blue Centre = Moderate Quality (Denoted By Letter B)
- ⊕ Yellow Centre = Low Quality (Denoted By Letter C)
- ⊕ Red Centre = Unsuitable To Retain (Denoted By Letter U)
- BS Root Protection Area As Shown By The Red Circle Around The Tree
- ⊕ Tree / Woodland Groups (Root Protection Area Shown By Red Outline Surrounding Group)
- ⊕ Hedgerows (Root Protection Area Shown By Red Outline Surrounding Hedge)



Please Note: Trees 3, 4 and 8-12 have been removed following the initial survey



 Institute of Chartered Foresters
Registered Consultant

Arboricultural Impact Assessment
Existing Trees Shown On Existing Layout

19 West Meadows Road,
Cleaton
For
Mrs A Mulholland

 AllAboutTrees Ltd
Arboricultural & Ecological Consulting
Chartered Arboriculturalists & Environmentalists

The Old School, Quarry Lane,
Butterknowle, Co. Durham, DL13 5LN
Tel 0191 3739494 01388 710481
email info@allabouttrees.co.uk www.allabouttrees.co.uk

Drawn at Durham Office By TA Checked by AW

Scale 1:200 at A2 Date 19.05.22

-Registered Chartered -Arboricultural Consultants -Planning & Development -Urban Forestry -Ecological Consultants	Drawing Ref.	Revision
	AIA Exi	-